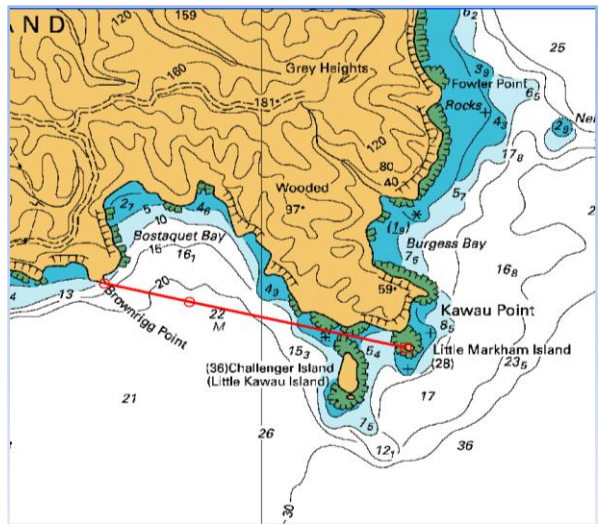


Course 1 Kawau – Bostaquet Bay

Distance	13.2 miles
Course	Navy Buoy Port, Finish 1
Time Limit	6 hours

Finish 1 Bostaquet

Transit	Brownrigg Point	
	36° 26.827 S	174° 51.306 E
Bearings	Little Markham Island	
	36° 27.071 S	174° 52.616 E
Waypoint	36° 26.896 S	174° 51.672 E



not to be used for navigation

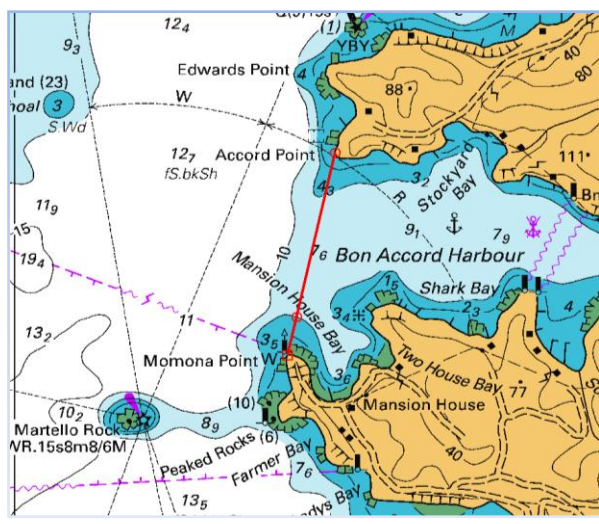
Chart Ref: NZ5227

Course 2 Kawau via Motuora - Bon Accord

Distance	16.2 miles
Course	Navy Buoy Port, Motuora Is. Stbd, Motutara Is. Stbd, Finish 2
Time Limit	6 hours

Finish 2 Bon Accord

Transit	Accord Point	
	36° 25.071 S	174° 49.107 E
Bearings	Momona Point	
	36° 25.699 S	174° 48.945 E
Waypoint	36° 25.575 S	174° 48.976 E



not to be used for navigation

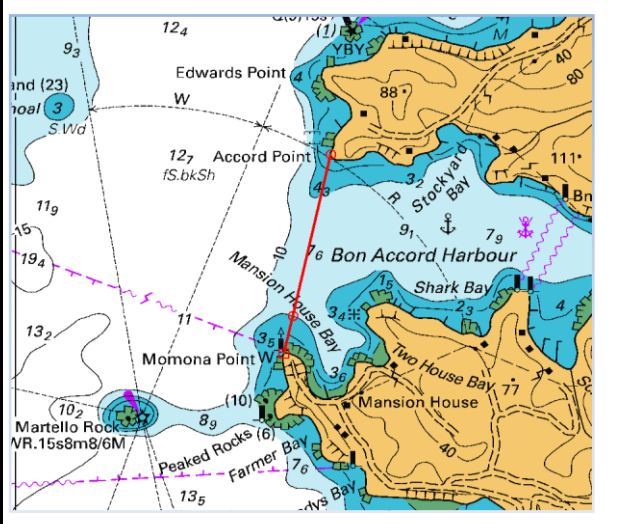
Chart Ref: NZ5227

Course 3 Kawau – Mansion House Bay

Distance	15.0 miles
Course	Navy Buoy Port, Motuketekete Is. Port, Martello Rock Port, Finish 2
Time Limit	6 hours

Finish 2 Bon Accord

Transit	Accord Point	
	36° 25.071 S	174° 49.107 E
Bearings	Momona Point	
	36° 25.699 S	174° 48.945 E
Waypoint	36° 25.575 S	174° 48.976 E



not to be used for navigation

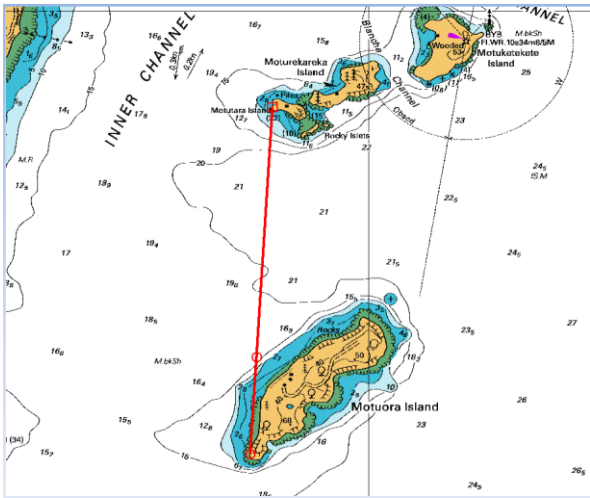
Chart Ref: NZ5227

Course 4 Motuora Is.

Distance	11.3 miles
Course	Navy Buoy Port, Motuora Is. Stbd, Finish 4
Time Limit	6 hours

Finish 4 Motuora

Transit	SW end Motuora Island	36° 30.746 S	174° 47.133 E
	W end Motutara Island	36° 28.572 S	174° 47.329 E
Bearings	164°, 344°		
Waypoint	36° 30.141 S	174° 47.186 E	



not to be used for navigation

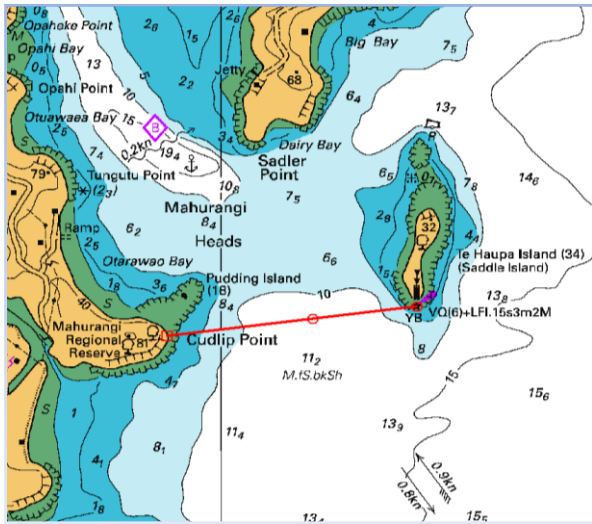
Chart Ref: NZ5321

Course 5 Mahurangi

Distance	11.6 miles
Course	Navy Buoy Port, Te Haupa Is. (Saddle Is.) Stbd, Finish 5
Time Limit	6 hours

Finish 5 Mahurangi

Transit	Cudlip Point	36° 30.975 S	174° 43.734 E
	Te Haupa Island Light	36° 30.900 S	174° 44.800 E
Bearings	65°, 245°		
Waypoint	36° 30.929 S	174° 44.365 E	



not to be used for navigation

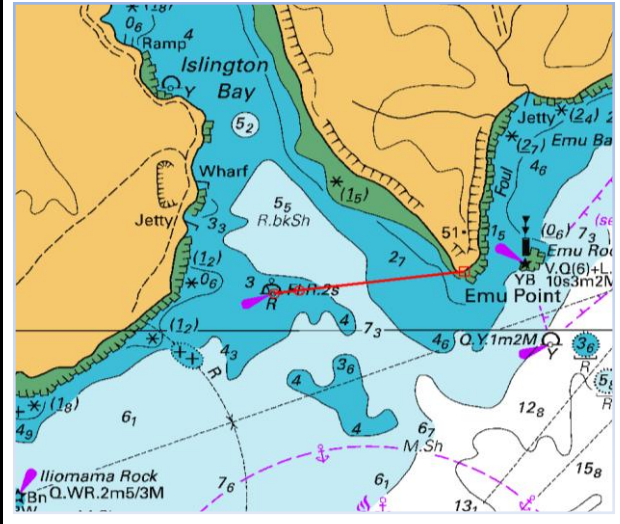
Chart Ref: NZ5321

Course 6 Islington Bay via Rangitoto

Distance	14.5 miles
Course	Rangitoto Port, Iliomona Rock Port, Finish 6
Time Limit	6 hours

Finish 6 Islington

Transit	Islington Bay Light R Fl.R.2s	36° 47.882 S	174° 54.055 E
	Emu Point	36° 47.793 S	174° 54.706 E
Bearings	63°, 243°		
Waypoint	36° 47.870 S	174° 54.128 E	



not to be used for navigation

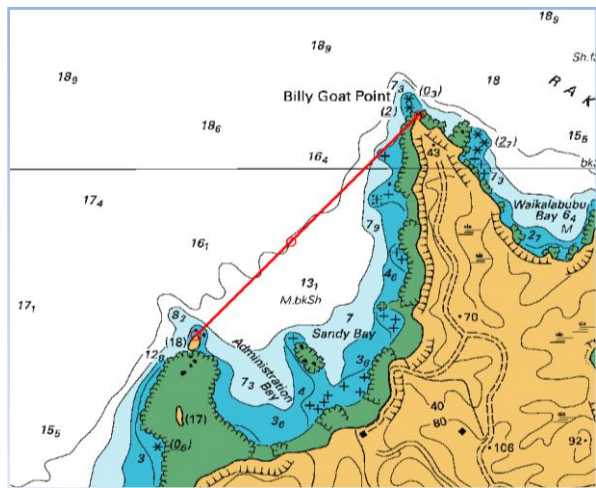
Chart Ref: NZ5324

Course 7 Motutapu Is – Administration Bay

Distance	8.6 miles
Course	Direct, Finish 7
Time Limit	6 hours

Finish 7 Administration

Transit	Rocky Islet	
	36° 44.688 S	174° 53.871 E
	Billy Goat Point	
	36° 43.822 S	174° 54.884 E
Bearings	24°, 204°	
Waypoint	36° 44.306 S	174° 54.328 E



not to be used for navigation

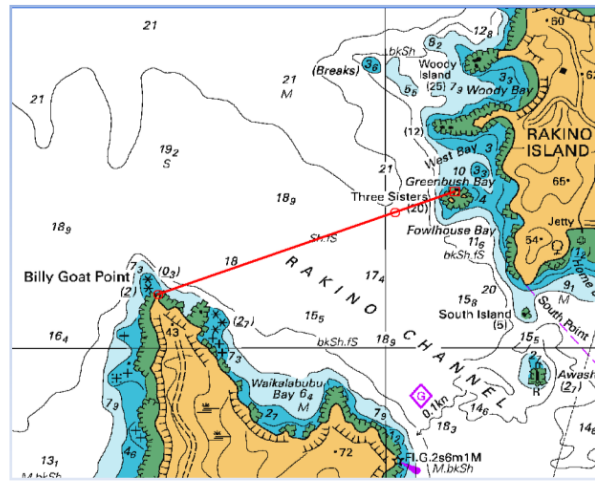
Chart Ref: NZ5321

Course 8 Rakino Island – Woody Bay

Distance	8.8 miles
Course	Direct, Finish 8
Time Limit	6 hours

Finish 8 Rakino

Transit	Billy Goat Point	
	36° 43.822 S	174° 54.884 E
	Three Sisters	
	36° 43.353 S	174° 56.304 E
Bearings	51°, 231°	
Waypoint	36° 43.452 S	174° 56.013 E



not to be used for navigation

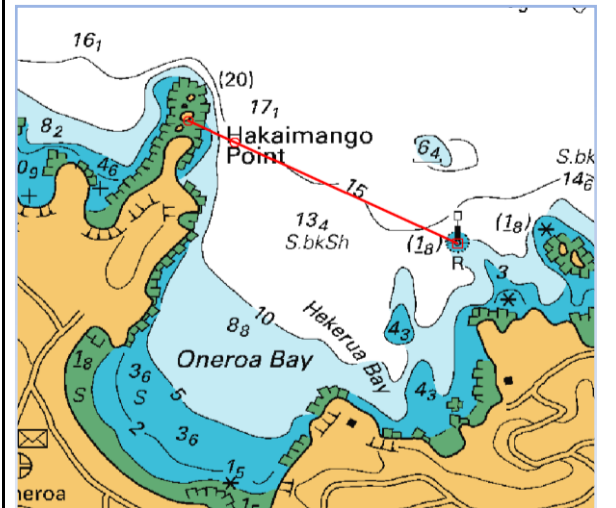
Chart Ref: NZ5324

Course 9 Waiheke – Oneroa

Distance	14.1 miles
Course	Rakino Port, Finish 9
Time Limit	6 hours

Finish 9 Oneroa

Transit	Hakaimango Point	
	36° 46.066 S	175° 00.860 E
	Port Beacon	
	36° 46.372 S	175° 01.611 E
Bearings	97°, 277°	
Waypoint	36° 46.130 S	175° 01.008 E



not to be used for navigation

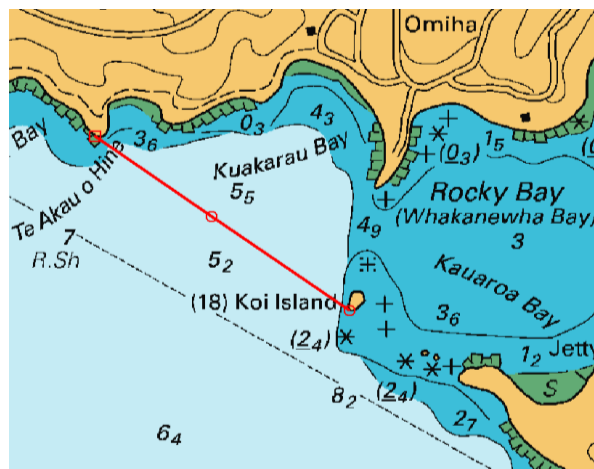
Chart Ref: NZ5324

Course 10 Waiheke – Rocky Bay

Distance	18.7 miles
Course	Rakino Stbd, Finish 10
Time Limit	6 hours

Finish 10 Rocky Bay

Transit	Te Akau o Hine	
	36° 49.245 S	175° 02.685 E
Bearings	Koi Island	
	36° 49.622 S	175° 03.317 E
Bearings	107°, 287°	
Waypoint	36° 49.418 S	175° 02.975 E



not to be used for navigation

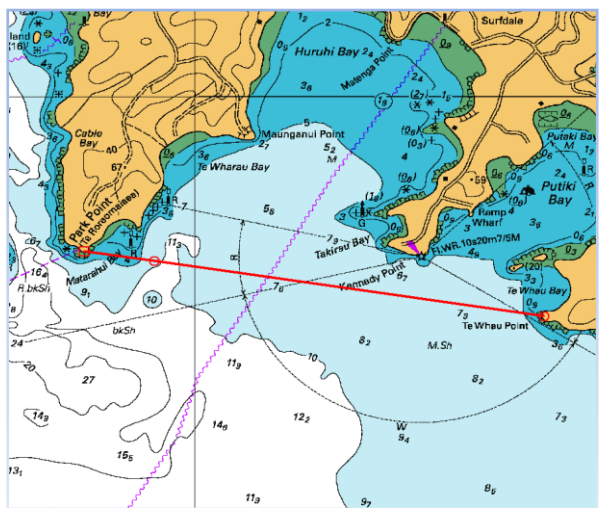
Chart Ref: NZ5324

Course 11 Waiheke – Putiki Bay(Huruhi Bay)

Distance	15.2 miles
Course	Rakino Port, Finish 11
Time Limit	6 hours

Finish 11 Huruhi

Transit	Park Point	
	36° 48.743 S	174° 59.364 E
Bearings	Te Whau Point	
	36° 49.065 S	175° 01.937 E
Bearings	79°, 259°	
Waypoint	36° 48.787 S	174° 59.758 E



not to be used for navigation

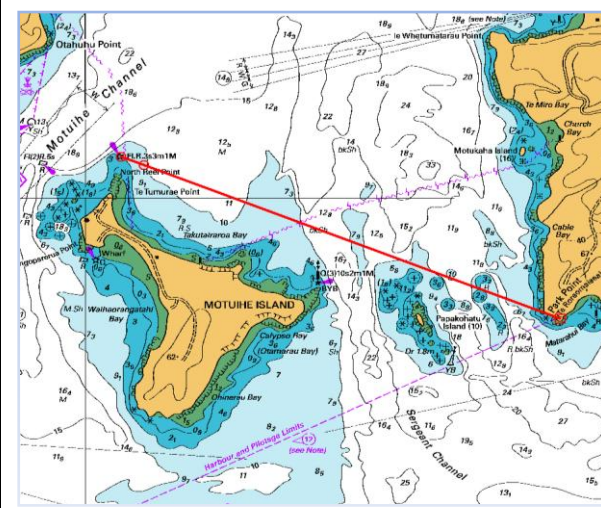
Chart Ref: NZ5324

Course 12 Motuihe Is

Distance	13.2 miles
Course	Mottutapu Is. Stbd, Finish 12
Time Limit	6 hours

Finish 12 Motuhi

Transit	Park Point	
	36° 48.743 S	174° 59.364 E
Bearings	North Reef Light Fl.R.3s	
	36° 47.700 S	174° 56.200 E
Bearings	92°, 272°	
Waypoint	36° 48.784 S	174° 59.393 E



not to be used for navigation

Chart Ref: NZ5324

Course 13 Waiheke - Man o War Bay

Distance	24.5 miles
Course	Rakino Is. Port, Waiheke Is. Stbd, Finish 13
Time Limit	8 hours

Finish 13 Man O War

Transit	Point E of Waiti Bay	036°46.703 S	175°11.569 E
	Pakatoa W Light 2FR(ver)2M	036°47.550 S	175°11.350 E
Bearings	173°, 353°		
Waypoint	036°47.013 S	175°11.478 E	

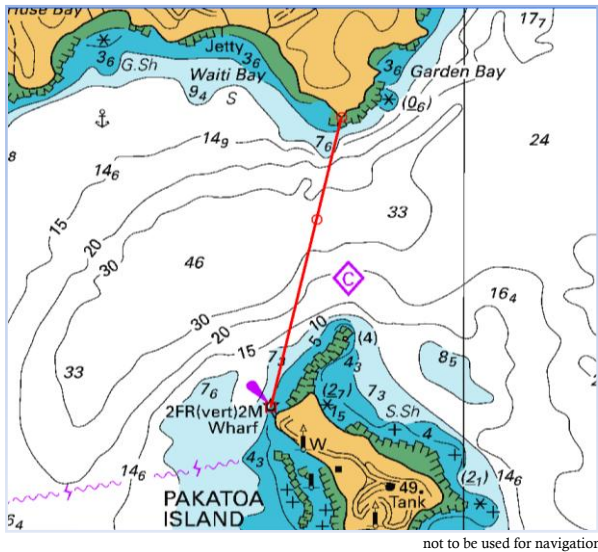


Chart Ref: NZ5324

Course 14 Te Kouma

Distance	32.8 miles
Course	Waiheke Is. Stbd, Finish 14
Time Limit	8 hours

Finish 14 Te Kouma

Transit	Tokaanu Reef Marker	036°50.026 S	175°24.926 E
	Wekarua Island W end	036°50.449 S	175°25.008 E
Bearings	147°, 327°		
Waypoint	036°50.229 S	175°24.926 E	

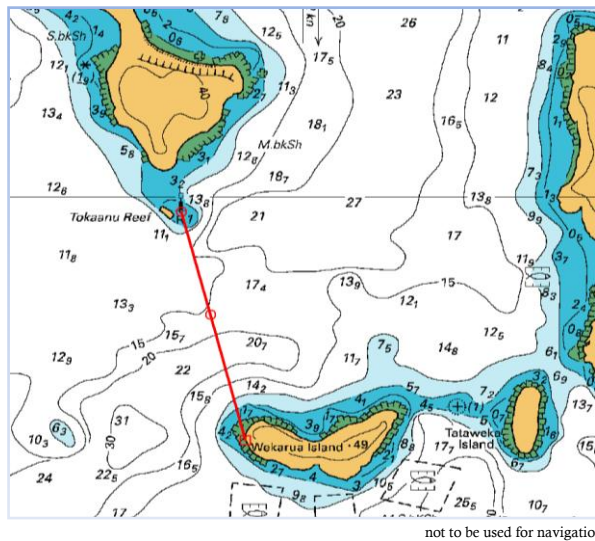


Chart Ref: NZ5328

Course 15 Rakino via Orarapa Island

Distance	11.0 miles
Course	Orarapa Is. (Haystack Is.) Stbd, Finish 8
Time Limit	6 hours

Finish 8 Rakino

Transit	Billy Goat Point	36° 43.822 S	174° 54.884 E
	Three Sisters	36° 43.353 S	174° 56.304 E
Bearings	51°, 231°		
Waypoint	36° 43.452 S	174° 56.013 E	

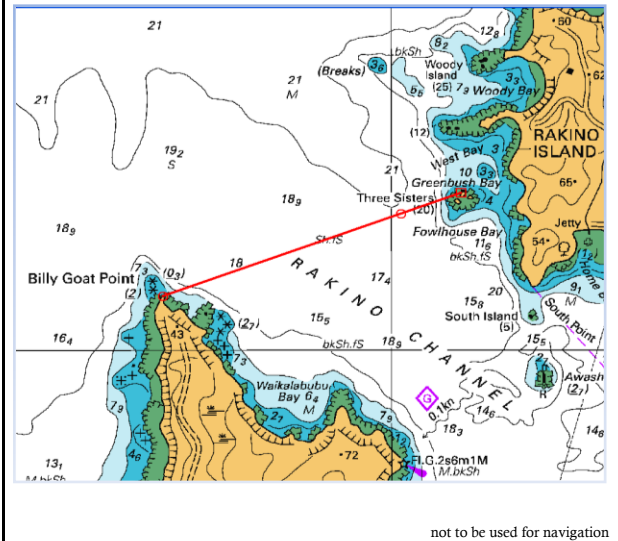


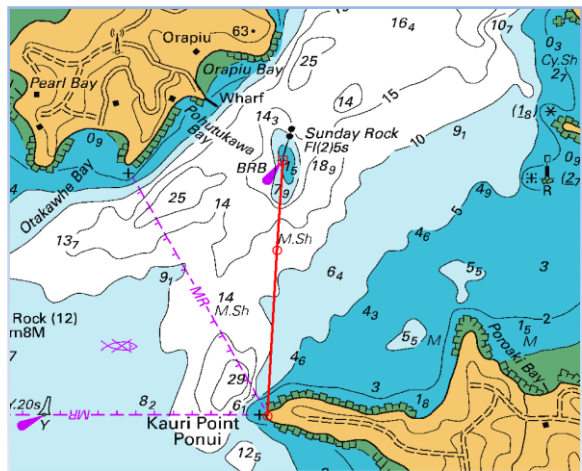
Chart Ref: NZ5324

Course 16 Ponui – Oranga Bay (Shark Bay)

Distance	24.0 miles
Course	Motutapu Is. Stbd, Waiheke Is. Port, Finish 16
Time Limit	8 hours

Finish 16 Sunday

Transit	Sunday Rock Light Fl(2)5s	036°50.874 S	175°09.208 E
	Kauri Point	036°51.724 S	175°09.150 E
Bearings	163°, 343°		
Waypoint	036°51.173 S	175°09.186 E	



not to be used for navigation

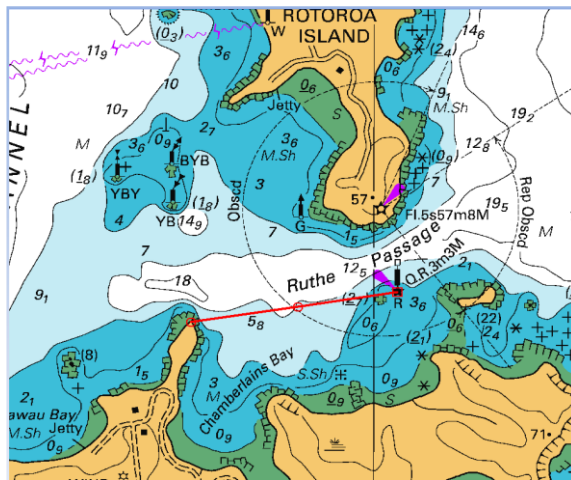
Chart Ref: NZ5324

Course 17 Ponui – Chamberlains Bay

Distance	27.4 miles
Course	Rakino Is. Port, Waiheke Is. Stbd, Finish 17
Time Limit	8 hours

Finish 17 Chamberlains

Transit	Chamberlains Bay W Point	036°49.808 S	175°11.319 E
	Ruthe Passage Light Q.R.3m3M	036°49.757 S	175°12.088 E
Bearings	61°, 241°		
Waypoint	036°49.709 S	175°11.716 E	



not to be used for navigation

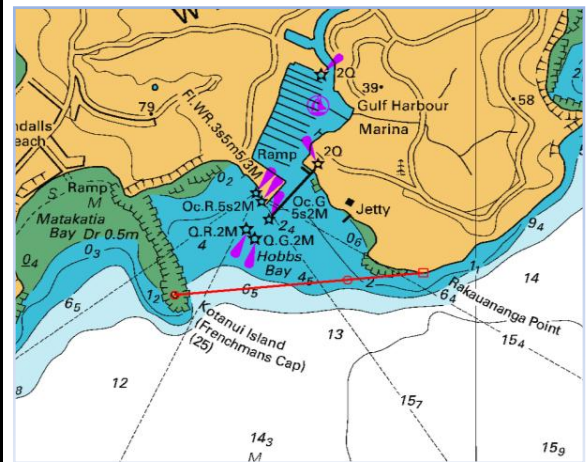
Chart Ref: NZ5324

Course 18 Day Course

Distance	19.8 miles
Course	Navy Buoy Stbd, Orarapa Is. (Haystack Is.) Stbd, Finish 18
Time Limit	6 hours

Finish 18 Marina

Transit	Kotanui Island (Frenchmans Cap)	036°37.860 S	174°46.840 E
	Rakauananga Point	036°37.785 S	174°47.797 E
Bearings	65°, 245°		
Waypoint	036°37.808 S	174°47.505 E	



not to be used for navigation

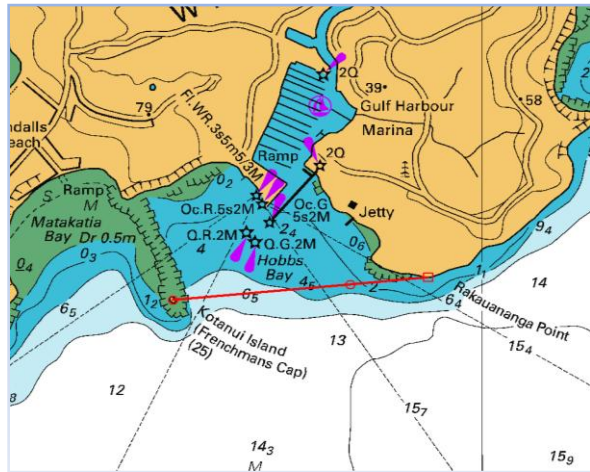
Chart Ref: NZ5321

Course 19 Day Course

Distance	19.8 miles
Course	Orarapa Is. (Haystack Is.) Port, Navy Buoy Port, Finish 18
Time Limit	6 hours

Finish 18 Marina

Transit	Kotanui Island (Frenchmans Cap)	036°37.860 S	174°46.840 E
	Rakauananga Point	036°37.785 S	174°47.797 E
Bearings	65°, 245°		
Waypoint	036°37.808 S	174°47.505 E	



not to be used for navigation

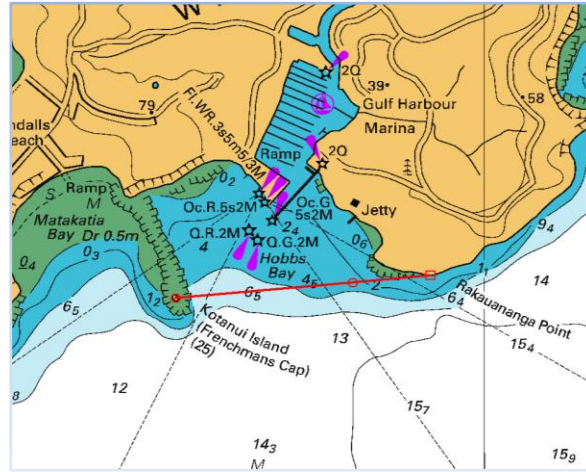
Chart Ref: NZ5321

Course 20 Day Course

Distance	23.0 miles
Course	Northern mark off Piripiri Point (36° 39.7 S / 174° 45.3 S) Port, Orarapa Is. (Haystack Is.) Port, Navy Buoy Port, Finish 18
Time Limit	8 hours

Finish 18 Marina

Transit	Kotanui Island (Frenchmans Cap)	036°37.860 S	174°46.840 E
	Rakauananga Point	036°37.785 S	174°47.797 E
Bearings	65°, 245°		
Waypoint	036°37.808 S	174°47.505 E	



not to be used for navigation

Chart Ref: NZ5321