



Summer Cruising Series 2016 - 2017

Gulf Harbour Yacht Club

The Organising Authority is the
Gulf Harbour Yacht Club Inc, 1299 Laurie Southwick Pde., Gulf Harbour.
Further details, contact the administration office at the GHYC. Ph 09 424 2118.

Notice of Race and Sailing Instructions

1.0 Rules

1.1 The regatta will be governed by the Racing Rules of Sailing 2013-2016, with modifications and additions as detailed below.

1.2 For Keel Yachts the YNZ Safety Regulations Part II, category 5 shall apply.

1.3 For Trailer Yachts the YNZ Safety Regulations Part V, Category B shall apply.

1.4 A boat shall not discharge trash into the water.

1.5 Boats shall not fly extras and must be equipped with a VHF radio and a dinghy. Dinghies must be inflated, and may be towed or stowed aboard. Extras are defined as Sails not usually used to advantage to windward. All sails must be attached to a mast or permanently fixed stay on centre line with only one sail per stay. A headsail may be poled out using a spinnaker pole.

1.6 Any rigging or equipment may be operated or adjusted by any available power e.g. Auto helms, electric winches. This changes rule 52.

2.0 Eligibility and Entry

2.1 Entries will be accepted from Keel Yachts, Multihulls and Trailer Yachts registered with YNZ and whose owners/skippers are financial members of a yacht club affiliated to YNZ.

2.2 Entries must be on the attached form and returned to the Gulf Harbour Yacht Club on or before the date listed together with the entry fee designated. Entries for the Series should be before Friday 14th October at 1600 hours- \$80.00.

2.3 Late Series Entries: Will be accepted up to Friday 4th November at 1600 hours - \$100.00 for the series.

2.4 Individual Race: \$15.00 lodged with a Committee member at the destination up to 2 hours after the last boat finishes. Entrants in this category are not eligible as series entrants.

3.0 Notices to Competitors

Notices to competitors will be posted on the official notice board located within the GHYC.

4.0 Changes to Sailing Instructions

Any change to the Sailing Instructions will be posted by 0830 hours on the day it will take effect.

5.0 Signals Made Ashore

Signals made ashore will be displayed at the Gulf Harbour Yacht Club flagpole.

6.0 Schedule of Races

Date	Race	Starting Time	
Sat 22 nd Oct 2016	1	1000	
Sat 5 th Nov 2016	2	1000	First Combined Race
Sat 19 th Nov 2016	3	1000	Second Combined Race
Sat 10 th Dec 2016	4	1000	Christmas Cruise
Sat 28 th Jan 20 17	5	1000	Anniversary Weekend
Sun 12 th Feb 2017	6	1000	Return race from Kawau Island
Sat 25 th Feb 2017	7	1000	Third Combined Race
Sat 11 th Mar 20178		1000	
Sat 25 th Mar 2017	9	1000	
Fri 14 th Apr 2017	10	1000	Easter Race to Waiheke

Courses will be chosen on the evening before the race from the list of courses and displayed on the notice board.

7.0 Class Flag

Class flag will be White

8.0 Racing Area

Races will be held on the waters of the Hauraki Gulf.

9.0 Course to be sailed

The Courses are detailed in Attachment 1. On the evening prior to the race, and no later than 20:30, the course and destination for the day's race will be displayed on the Club notice board, along with the nominated starting procedure (1 or 2). Note the course may be cancelled/ changed/ or shortened on the day of the race due to weather conditions.

Any changes will be displayed on the club notice board no later than 08:30 hours on the day of the race and by flying appropriate flags on the GHYC flag pole.

The start boat (if present) will display the course number prior to the warning signal.

10.0 Official Boats

The Start and Finish boats and their VHF call sign will be advised with the course instructions for each race. The Chief Race Officer will be the Chair of the Cruising Committee or his/her delegate and their VHF call sign and mobile phone number will also be advised in the course instructions.

11.0 The Start

There will be two different starting procedures (1 and 2) and the starting procedure for any particular race will be indicated on the notice board outside the clubrooms by 20:30 on the day prior to the race day

Starting Procedure 1 – will be as follows:

The starting line will be between the staff displaying an orange flag on the Committee Boat and the Port end starting mark

GHYC only races will start outside the Gulf Harbour Marina. Combined races will start off Little Manly Beach.

Races will be started using Rule 26.

Signal	Flag	Sound	Minutes before Starting Signal
Alert	Orange flag	1 sound	10
Warning	Class Flag	1 sound	5
Preparatory	P flag	1 sound	4
1 minute	P flag removed	1 long sound	1
Starting	Class Flag removed	1 sound	0

Starting Procedure 2 – will be as follows:

The starting line will be a transit line between the outer Gulf Harbour Marina RED marker (to Port) and the Southern face of Kotanui Island (Frenchman's Cap) (to Starboard). There will NOT be a start boat and there will NOT be any sound signals. The race will start at the designated time (GPS time).

11.3 Engines must not be used to propel the boat within four minutes of the start.

11.4 A boat starting later than 15 minutes after her starting signal will be scored DNS.

11.5 All boats starting must call the Race Officer of the day – by hail or radio – advising the number of people aboard (P.O.B.) Failure to advise P.O.B. will deem a boat a Non Starter. All boats must carry a crew list with names and contact details of next of kin for all on board (including skipper) for each race. The skipper is responsible for maintaining the list and ensuring all crew know it's location on board.

12.0 Change of Course after the Start

The Race Officer may change or shorten the course after the start by advising over VHF Channel 66 call sign "Gulf Harbour Sports Radio". Such announcements will be made at 15 & 45 minutes past the hour for the duration of the race. This changes Rule 32.

13.0 The Finish

The finish will be described in the course instructions for that day's race. All competitors should take note of the (GPS) time they cross the nominated finish line and advise the officer of the day of their time. There may be an official finish boat on station to verify all finish times.

14.0 Time Limits

14.1 Boats failing to finish by 6 hours (8 hours for races over 20 miles long) after the start will be scored DNF.

15.0 Protests and requests for Redress

15.1 The protest time limit is 45 minutes after the last boat has finished.

15.2 For protests where only a Rule of Part 2 is alleged to have been broken, an arbitration hearing may be offered prior to any hearing.

16.0 Scoring

16.1 One (1) race is required to be completed to constitute a series.

16.2 Each boat's series score will be the total of her race scores with her worst scores discarded. If less than six races are sailed, then all results will be counted, if six or more races are completed then six results will be counted with her worst four scores discarded.

17.0 Safety Regulations

A boat that retires from a race shall notify the Race Officer immediately on VHF Channel 66 call sign "Gulf Harbour Sports Radio" and wait for an acknowledgement. If there is no acknowledgement by VHF the retiring boat must call the Race Officer's mobile phone.

18.0 Radio Communications

18.1 VHF call sign for the Race Officer is "Gulf Harbour Sports Radio" on Channel 66.

18.2 All boats shall maintain a radio schedule on VHF 66 at 15 & 45 minutes past the hour for the duration of the race.

19.0 Prizes

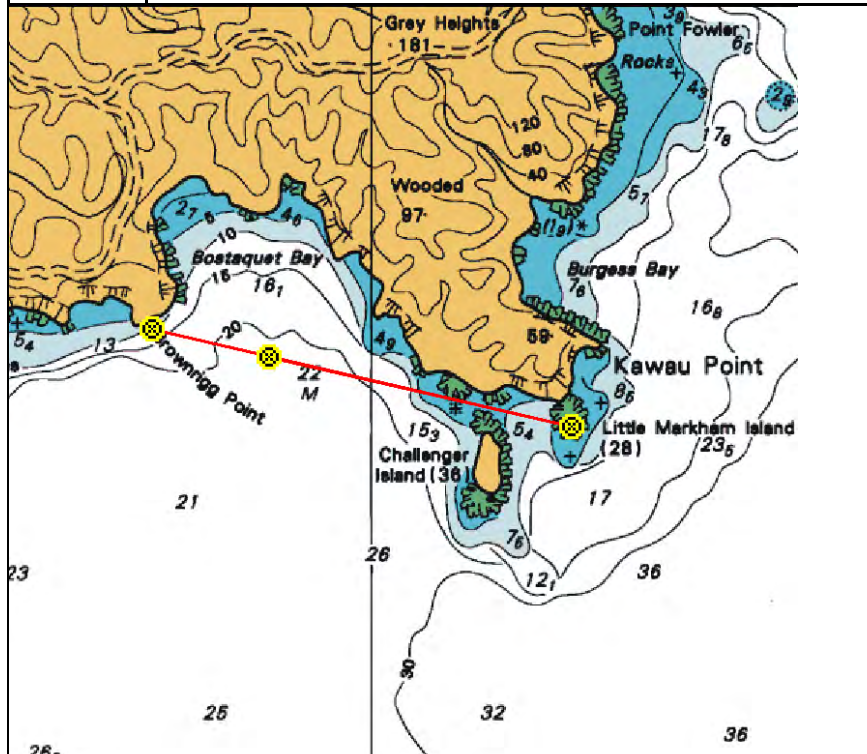
Day prizes will be awarded at the barbeque / prize giving after the race. A committee boat will advise the location and time of the event. Competitors must be present at the time of the presentation on the day to receive day prizes. Series prizes will be awarded during the Summer Prize Giving on Saturday 13th May 2017.

20.0 Disclaimer of Liability

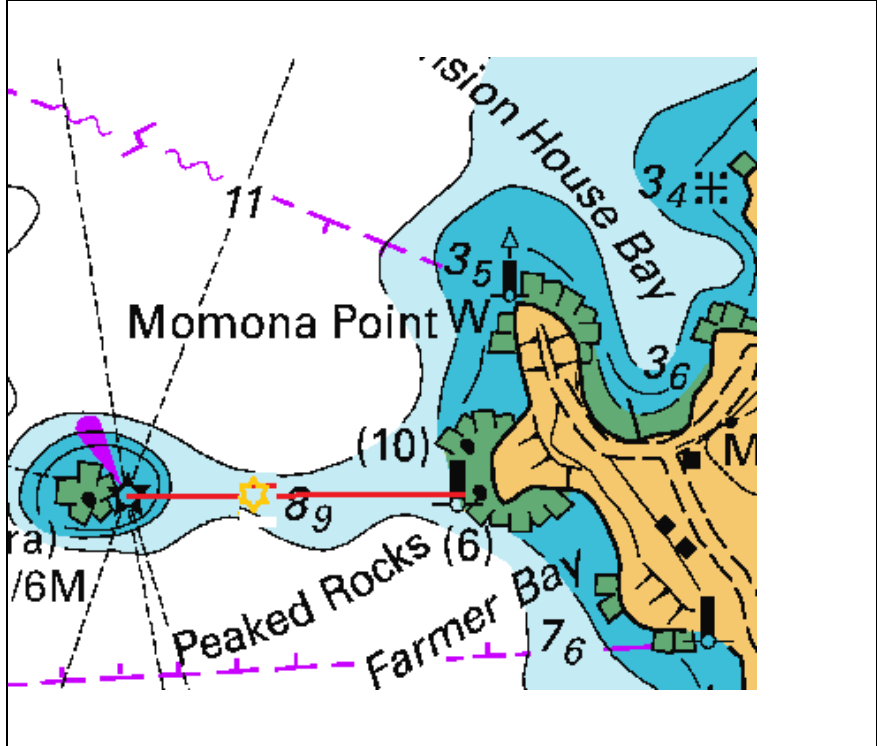
Competitors participate in the regatta entirely at their own risk. See rule 4, Decision to Race. The Organizing Authority will not accept any liability for material damage or personal injury or death sustained in conjunction with or prior to, during, or after the regatta.

Attachment 1 - Courses 2016 - 2017

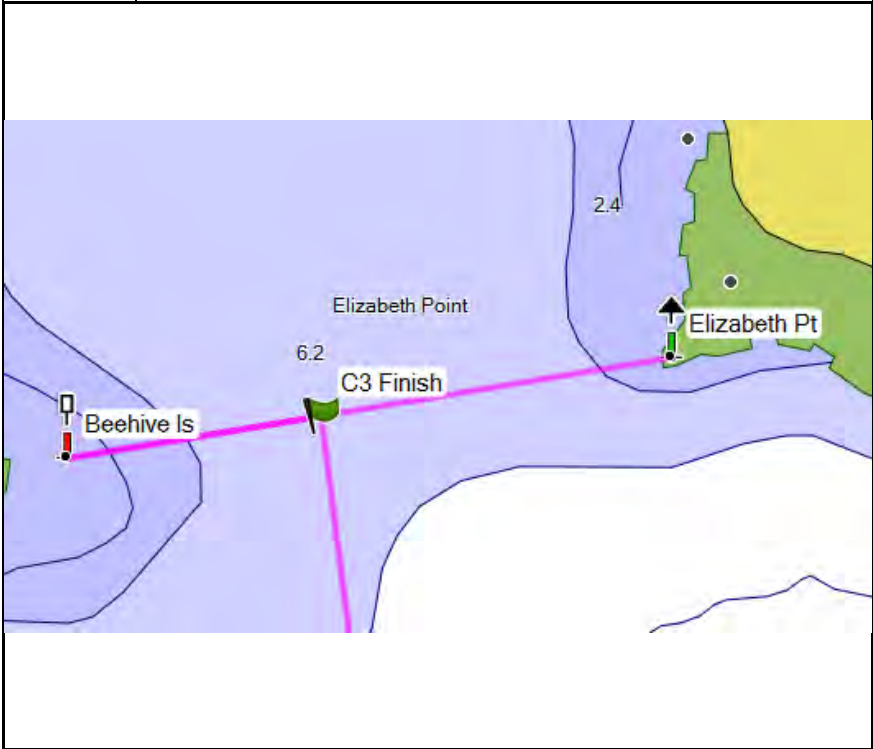
Course 1 Kawau – Bostaquet Bay			
Distance	14.8 miles	Time Limit: 6 hours	
Course	Navy Buoy [P], Finish 1		
BBQ	Bostaquet Bay		
Finish 1: Bostaquet Bay			
Transit	Brownrigg Point	36° 26.827 S	174° 51.306 E
	Little Markham Island	36° 27.071 S	174° 52.616 E
Waypoint	36° 26.896 S 174° 51.672 E [Bearing 263.9° Mag. to Brownrigg Pt]		
Chart	NZ 5227		



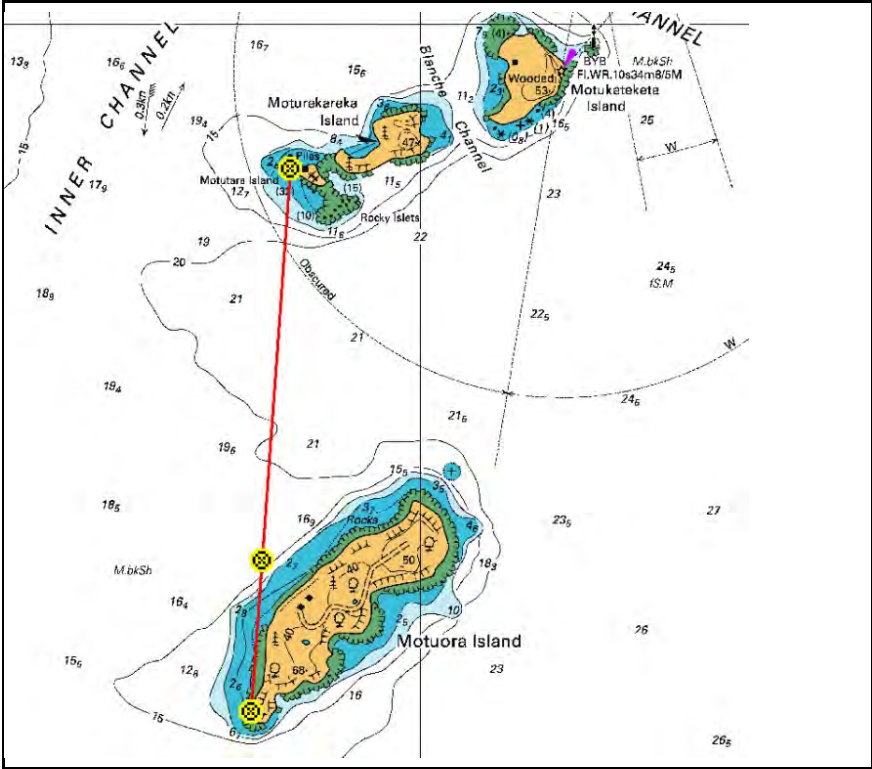
Course 2 Kawau via Motuora - Bon Accord	
Distance	17.2 miles
Time Limit	6 hours
Course	Navy Buoy [P], Motuora Is. [S], Motutara Is. [S], Finish 2
BBQ	Mansion House Bay
Finish 2: Martello Rock	
Transit	Peaked Rocks 36° 25.886 S 174° 48.906 E
	Martello Rock 36° 25.890 S 174° 48.484 E
Waypoint	36° 25.886 S 174° 48.612 E [Bearing 250.6° mag to Martello Light]
Chart	NZ5227



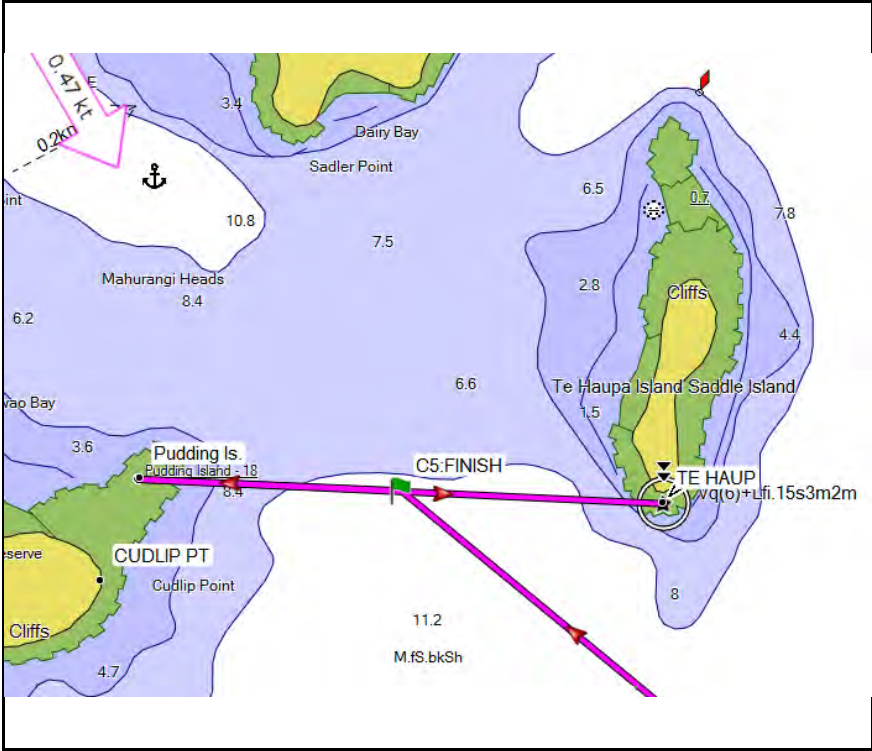
Course 3 Kawau – Mansion House Bay		
Distance	14.7 miles	Time Limit: 6 hours
Course	Navy Buoy [P], Passage Reef. [P], Beehive Is [P], Finish 2	
BBQ	Mansion House Bay	
Finish 3: Elizabeth Point		
Transit	Beehive Is.	S36 27.095 E174 49.486
	Elizabeth Point	S36 27.029 E174 49.949
Waypoint	S36 27.067 E174 49.681 [Bearing 240.6 ^o mag to Beehive mark]	
Chart	NZ5227	



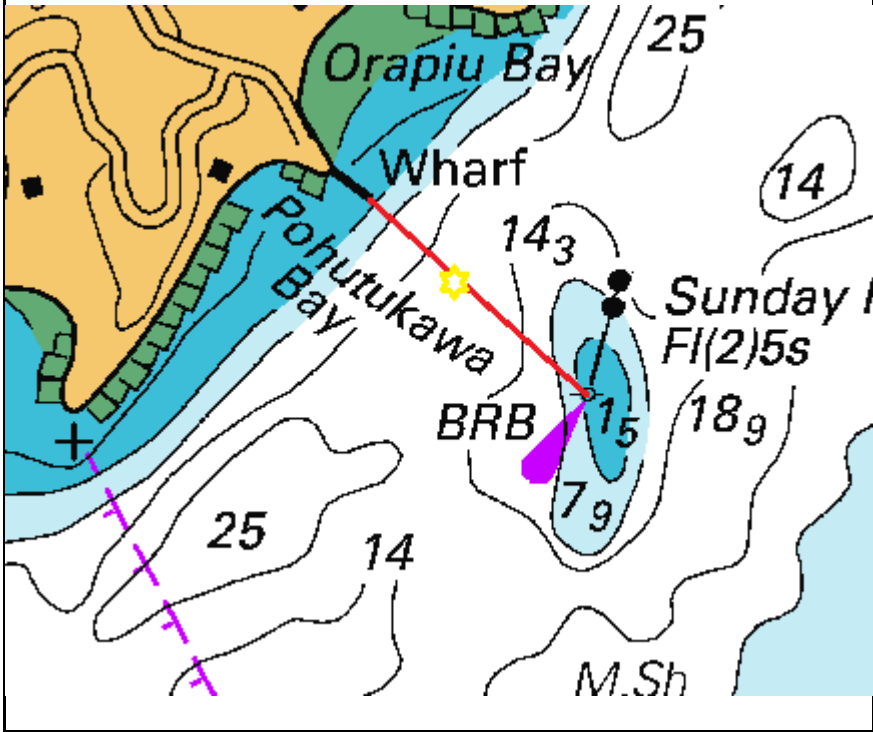
Course 4: Motuora Is.			
Distance	13.0 miles	Time Limit: 6 hours	
Course	Navy Buoy [P], Motuora Is. [S], Finish 4		
BBQ	West side beach by old wharf		
Finish 4: Motuora			
Transit	SW end Motuora Island	36° 30.746 S	174° 47.133 E
	W end Motutara Island	36° 28.572 S	174° 47.329 E
Waypoint	36° 30.141 S 174° 47.186 E [Bearing 343.60 mag to Motutara Is]		
Chart	NZ5321		



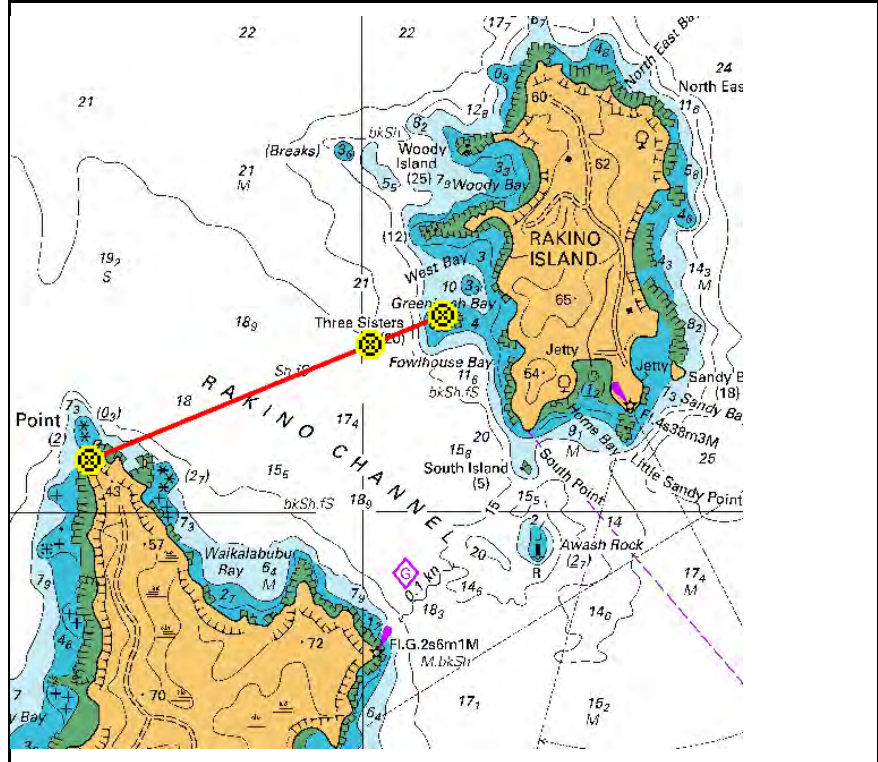
Course 5: Mahurangi		
Distance	13.2 miles	Time Limit: 6 hours
Course	Navy Buoy [P], Te Haupa Is. (Saddle Is.) [S], Finish 5	
BBQ	Otarawao (Sullivan's) Bay	
Finish 5: Mahurangi		
Transit	Pudding Is	36° 30.828 S 174° 43.844 E
	Te Haupa Island Light	36° 30.900 S 174° 44.800 E
Waypoint	36° 30.846 S 174° 44.339 E [Bearing 73.5° mag to Te Haupa Light]	
Chart	NZ5321	



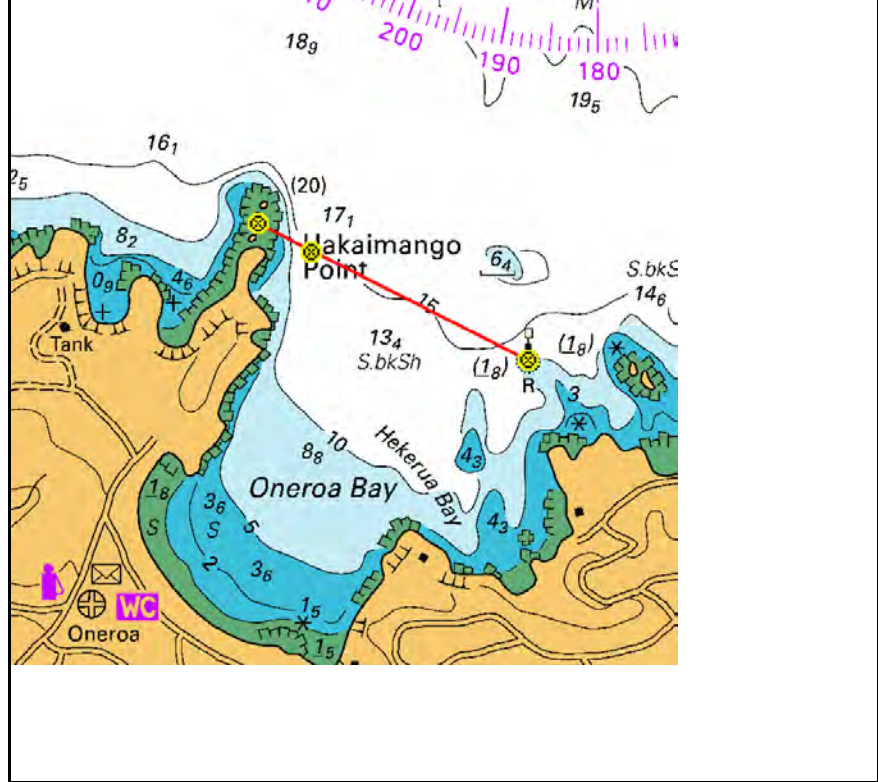
Course 7: Ponui – Shark Bay		
Distance	23.8 miles	Time Limit: 6 hours
Course	Rakino [P], Waikeke [P], Finish 7	
BBQ	Shark Bay or alternate. TBD	
Finish 7: Shark Bay		
Transit	Sunday Rock	36° 50.874 S 175° 09.208 E
	Orapiu Bay Wharf	36° 50.692 S 175° 08.969 E
Waypoint	36° 50.765 S 175° 09.065 E [Bearing 114.1° mag to Sunday Rk]	
Chart	NZ5324	



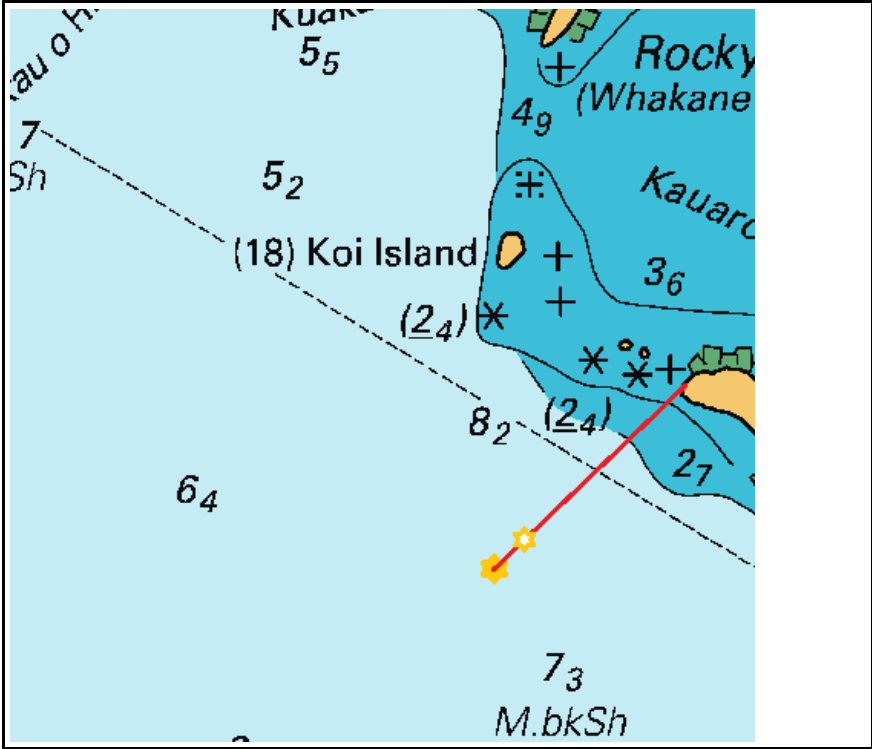
Course 8: Rakino Island – Woody Bay		
Distance	9.6 miles	Time Limit: 6 hours
Course	Direct, Finish 8	
BBQ	Woody Bay or alternative	
Finish 8: Rakino		
Transit	Billy Goat Point	36° 43.782 S 174° 54.939 E
	Three Sisters	36° 43.396 S 174° 56.308 E
Waypoint	36° 43.468 S 174° 56.053 E [Bearing 51.2° mag to Three-Sisters]	
Chart	NZ5324	



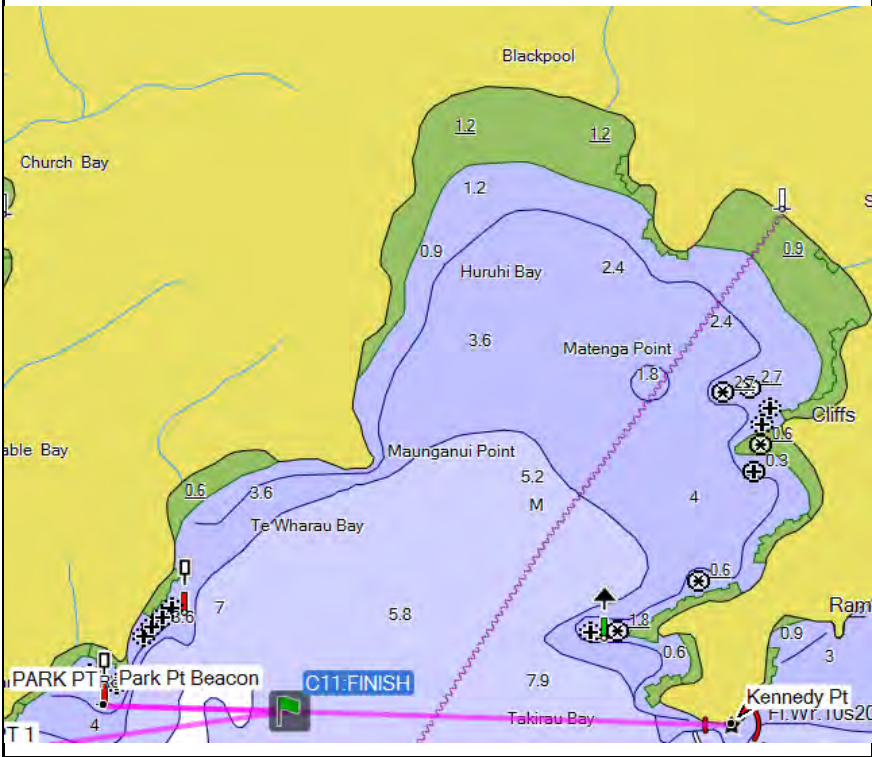
Course 9: Waiheke – Oneroa		
Distance	14.5 miles	Time Limit: 6 hours
Course	Rakino [P], Finish 9	
BBQ	Oneroa / Little Oneroa Beach	
Finish 9: Oneroa		
Transit	Hakaimango Point	36° 46.066 S 175° 00.860 E
	Port Beacon	36° 46.372 S 175° 01.611 E
Waypoint	36° 46.130 S 175° 01.008 E [Bearing 98.0° mag to Port mark]	
Chart	NZ5324	



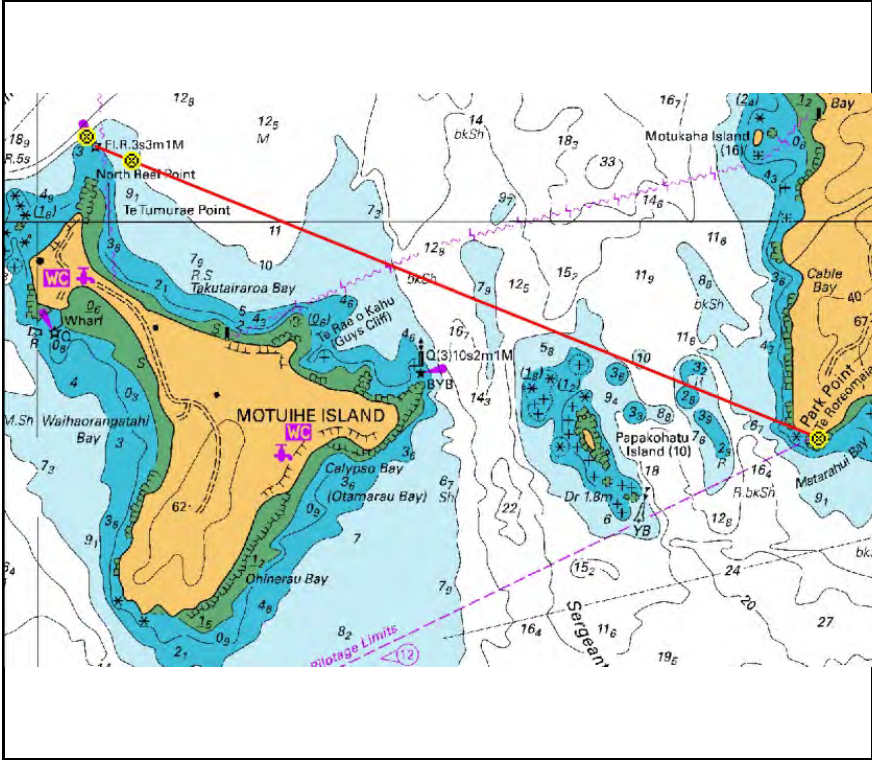
Course 10: Waiheke – Rocky Bay		
Distance	18.9 miles	Time Limit: 6 hours
Course	Rakino [P], Finish 10	
BBQ	To be advised	
Finish 10: Rocky Bay		
Transit	Kauraroa Bay Headland	36° 49.770 S 175° 03.592 E
	Rocky Bay Buoy	36° 49.980 S 175° 03.300 E
Waypoint	36° 49.957 S 175° 03.327 E [Bearing 208.8° to Rocky Buoy]	
Chart	NZ5324	



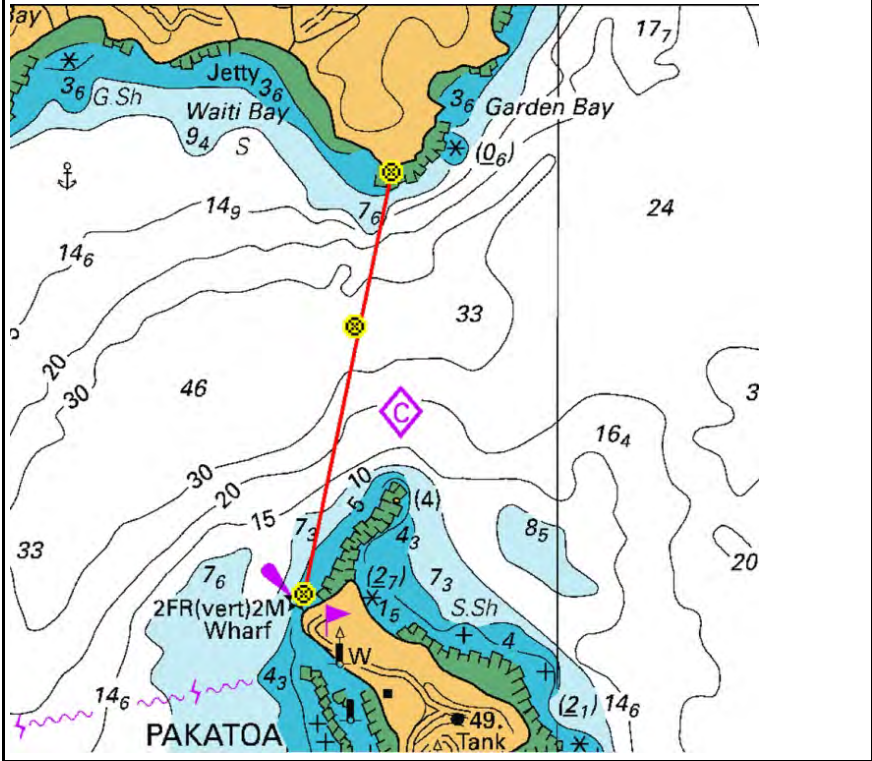
Course 11: Waiheke – Putiki Bay(Huruhi Bay)		
Distance	15.9 miles	Time Limit: 6 hours
Course	Rakino [P], Finish 11	
BBQ	Te Wharau Bay	
Finish 11: Huruhi Bay		
Transit	Park Point Beacon	36° 48.739 S 174° 59.642 E
	Kennedy Pt	36° 48.783 S 175° 01.267 E
Waypoint	36° 48.751 S 175° 00.124 E [Bearing 252.2° to Park Pt Beacon]	
Chart	NZ5324	



Course 12: Motuihe Is		
Distance	13.9 miles	Time Limit: 6 hours
Course	Rakino [P], Motutapu Is. [S], Finish 12	
BBQ	Motuihe Island	
Finish 12: Motuihe		
Transit	Park Point	36° 48.743 S 174° 59.364 E
	North Reef Light Fl.R.3s	36° 47.700 S 174° 56.200 E
Waypoint	36° 48.784 S 174° 59.393 E [Bearing 272.30 to Nth Reef mark]	
Chart	NZ5324	



Course 13: Waiheke - Man o War Bay		
Distance	26.1 miles	Time Limit: 8 hours
Course	Rakino Is. [P], Waiheke Is. [S], Finish 13	
BBQ	Man o' War Bay	
Finish 13: Man O War		
Transit	East point of Waiti Bay	036°46.703 S 175°11.569 E
	Pakatoa W Light	036°47.550 S 175°11.350 E
Waypoint	36° 47.013 S 175° 11.478 E [Bearing 201.7° mag to Pakatoa Light]	
Chart	NZ5324	



Course 14: Te Kouma		
Distance	34.2 miles	Time Limit: 8 hours
Course	Waiheke Is. [S], Finish 14	
BBQ	To be advised	
Finish 14: Te Kouma		
Transit	Tokaanu Reef Marker	036°50.026 S 175°24.926 E
	Wekarua Island W end	036°50.449 S 175°25.008 E
Waypoint	036°50.229 S 175°24.926 E [Bearing 326.90 to Tokaanu Reef mark]	
Chart	NZ5324	

