

Marine Solutions Gulf Harbour



VOLVO PENTA

MARINE SOLUTIONS VOLVO PENTA GULF SERIES 2017 / 2018

THE ORGANISING AUTHORITY IS THE
GULF HARBOUR YACHT CLUB INC, 1299 LAURIE SOUTHWICK PDE., GULF HARBOUR.
FURTHER DETAILS, CONTACT THE ADMINISTRATION OFFICE AT THE GHYC. PH 09 424 2118.

Notice of Race and Sailing Instructions

1.0 Rules

- 1.1 The regatta will be governed by the 'Rules' as defined in the World Sailing Racing Rules of Sailing.
- 1.2 For Keel Yachts, the YNZ Safety Regulations, Part II, Category 5 shall apply.
- 1.3 For Trailer Yachts, the YNZ Safety Regulations Part V, Category B shall apply.
- 1.4 All yachts must be equipped with a VHF radio capable of transmitting and receiving on all IMM VHF channels.
- 1.5 Boats may fly extras (Extras are defined as sails not usually used to advantage to windward).
- 1.6 One Design yachts must conform to their International / National Class Rules.

2.0 Eligibility and Entry

- 2.1 Entries will be accepted from Keel Yachts, Multihulls and Trailer Yachts registered with YNZ and whose Owners/Skippers are financial members of a yacht club affiliated to YNZ.

- 2.2 Gulf Harbour Yacht Club (GHYC) reserves the right to accept or refuse any entry.
- 2.3 Entries must be made to the GHYC using the on-line entry form on the GHYC website, with electronic payment of the designated entry fee. This method facilitates collation of entry information for the Race Management and Handicapping Staff.
- 2.4 Only Series Entrants will be eligible for Series Points. Entries for Individual Races must be received and fees paid to the GHYC prior to the start of the relevant individual race.
- 2.5 Entry Fees: \$15.00 per race or \$40.00 for the Series (four races)

Preferred payment of entry fee by Electronic payment to the GHYC Bank account ASB A/c No 12 3084 0101733 00. Please use Reference Gulf Series and boat name

- 2.6 **Series Entries:** Should be received by 1600 Monday 06 Nov 2017 (one week prior to Race One). Late Series entries will be accepted up to 1600 Friday 2 March 2018, but will be subject to a late entry fee of \$10-00. Any races completed prior to both a completed series entry form and payment being received will not be eligible for Series Points and will be scored as DNC
- 2.7 **Individual Race:** Entrants must be received by 2000hrs on the preceding Friday's. Race 1 Fri 10 Nov, Race 2 Fri 2 March, Race 3 Fri 16 March and Race 4 Fri 13 April. Entries must be made to the GHYC using the on-line entry form on the GHYC website, with electronic payment of the designated entry fee. Entrants in this category are not eligible as series entrants
- 2.8 A minimum of 3 boats entries are required to run a race

3.0 Notices to Competitors

- 3.1 Notices to Competitors may be posted as follows:
 - 3.1.1 On the official notice board within the GHYC;
 - 3.2.2 On the GHYC website www.ghyc.co.nz or via the GHYC Facebook page;
 - 3.2.3 Advised via TXT message to those Skippers of boats who have supplied a mobile phone number to the Race Committee (ideally via the Entry Form)

4.0 Changes to Sailing Instructions

- 4.1 Any change to the Sailing Instructions will be posted at least two hours prior to the scheduled start of the day's racing, on the day that it will take effect.
- 4.2 Notices of cancellation by TXT message may be posted at least two hours prior to the scheduled start of the day's racing

5.0 Signals Made Ashore

- 5.1 Signals made ashore may be displayed at the GHYC flagstaff.

6.0 Schedule of Briefings and Races

- 6.1 Briefings will be held at 1900 hrs at GHYC on Friday evenings preceding the races on Fri 10 Nov, Fri 2 Mar Fri 16 Mar and Fri 13 Apr
- 6.2 The Schedule of Races is as follows:

Race	Day	Date	Warning Signal	High Tide	Low Tide
One	Sunday	12 Nov 17	0955	1507 – 3.1	0836 – 0.7
Two	Sunday	4 Mar 18	0955	1005 – 3.6	1609 – 0.4
Three	Sunday	18 Mar 18	0955	0904 – 3.2	1502 – 0.7
Four	Sunday	15 Apr 18	0955	0646 – 3.1	1247 – 0.7

7.0 Classes / Divisions

- 7.1 Boats will race in one Class (Division). The Class Flag will be White.

8.0 Racing Area

- 8.1 The races will be held within the waters of the Hauraki Gulf in accordance with the selected course of the day within the Courses to Be Sailed

9.0 Courses to Be Sailed

- 9.1 The course of the day will be selected from the following list of courses:

Course Number	Course Details	Remarks	Distance (Nm)
One	Start / Gulf Harbour Yellow (S) / Long Bay Southern Yellow Special Buoy (P) / Navy Buoy (P) / Gulf Harbour Yellow (S) / Finish	Gulf Harbour Yellow 36° 39.1'S / 174° 48.0' E Long Bay Southern Special Buoy in position 36° 41.1' S / 174° 46.4' E Navy Buoy: Yellow Special Buoy (seaward of pair in Whangaparaoa Passage)	12
Two	Start / Gulf Harbour Yellow (S) / McKenzie Special Racing Buoy (P) / Haystack (P) / Gulf Harbour Yellow (S) / Finish	McKenzie Special Racing Buoy in position 36° 46.7 S / 174° 49.1 E	26
Three	Start / Gulf Harbour Yellow (P) Haystack (P) / Navy Buoy (P) / Gulf Harbour Yellow (S) / Finish	Navy Yellow Special Buoy (seaward of pair in Whangaparaoa Passage)	20
Four	Start / Gulf harbour Yellow (P) / Haystack (P) / Shearers Rock East Cardinal Buoy (P) / Gulf Harbour Yellow (S) / Finish	Shearers Rock East Cardinal Buoy in position 36° 36.4' S / 174° 55.3' E	22
Five	Start / Gulf Harbour Yellow (P) Haystack (P) / Tiritiri Island (P) / Navy Buoy (S) / Gulf Harbour Yellow (S) / Finish	Navy Yellow Special Buoy (seaward of pair in Whangaparaoa Passage)	23

Course Number	Course Details	Remarks	Distance (Nm)
Six	Start / Gulf Harbour Yellow (P) /Rakino Island (P) / Otata Island (Noises) (P) / Tiritiri Island (P) / Navy Buoy (S) / Gulf Harbour Yellow (S) /Finish	Otata Island in position 36° 41.7' S / 175° 58.5'E Navy Yellow Special Buoy (seaward of pair in Whangaparaoa Passage)	27
Seven	Start / Gulf Harbour Yellow (P) Tiritiri Island (P) / Motuora Island (P) / Navy Buoy (S) / Gulf Harbour Yellow //(S) Finish	Navy Yellow Special Buoy (seaward of pair in Whangaparaoa Passage)	27
Eight	Start / Gulf Harbour Yellow (P) Navy Buoy (P) / Motuketekete Island (P) / Navy Buoy (S) / Gulf Harbour Yellow (S) Finish	Navy Yellow Special Buoy (seaward of pair in Whangaparaoa Passage)	29
Nine	Start / Gulf Harbour Yellow (P) / Rakino Island (P) / D'Urville Rocks (P) / Tiritiri Island (P) / Navy Buoy (S) / Gulf Harbour Yellow (S) / Finish	D'Urville Rocks in position 36° 43.3' S / 175° 4.1' E Navy Yellow Special Buoy (seaward of pair in Whangaparaoa Passage)	35
Ten	Refer Committee Boat on the day for Start time and Course Details VHF CH 66 Note: This course option could be used for light winds		

10.0 The Start

- 10.1 The Start will be in the area south west of the entrance to the Gulf Harbour Marina.
- 10.2 The Starting Line will be between a staff displaying an Orange Flag on the GHYC Committee Boat at the Starboard End and the Course Side of an Orange Conical Buoy (laid) at the Port End.

- 10.3 To alert boats that a race or sequence of races will begin soon, the orange starting line flag will be displayed with one sound at least five minutes before a warning signal is made.
- 10.4 A boat that does not start within 10 minutes after her starting signal will be scored DNS without a hearing. This changes RRS A4 and A5.
- 10.5 No engines shall be used after the preparatory signal.
- 10.6 If any boat or part of a boat, or crew, is on the course side of the starting line at the starting signal and is identified, the race committee shall attempt to broadcast her number on VHF Ch 66. Failure to make a broadcast or to time it accurately will not be grounds for redress. This changes Rule 62.1 (a). (Redress)
- 10.2.1 In the event that the GHYC Committee Boat isn't available, then the Starting Line and Procedure will be as follows:
 - 10.2.2 The start line is between GPS Position 36° 38.0 S / 174° 46.5 E and Kotanui (Frenchmans Cap) Island. This position is on a transit between the North side of Kotanui Island and the conspicuous White Farm House on the Hill behind bearing 036° Magnetic (Refer Appendix A)
 - 10.2.3 Boats are to start at GPS time 1000hrs
 - 10.2.4 Engines must not be used within four minutes of the start time
 - 10.2.5 A boat starting later than 10 minutes after her start time will be scored DNS
 - 10.2.6 At the Briefing on the Friday preceding the race the Race Committee will designate one boat participating in the race as the Committee Boat and notify all entrants accordingly
 - 10.2.7 The course to be sailed will be advised by the Committee Boat over VHF Ch 66 by 0930hrs
- 11.0 The Finish Line
 - 11.1 The finish line is between GPS Position 36° 38.0 S / 174° 46.5 E and Kotanui (Frenchmans Cap) Island. This position is on a transit between the North side of Kotanui Island and the conspicuous White farm House on the Hill behind bearing 036° Magnetic (refer appendix A)
 - 11.2 Boats are to take their own finishing time using GPS time and communicate this to the designate Committee Boat

12.0 Time Limit

- 12.1 The Time Limit for the first boat to finish is 300 Minutes.
- 12.2 Boats failing to finish within 120 minutes after the first boat of the fleet sails the course and finishes will be scored 'Did Not Finish' (DNF). This changes RRS 35, A4 and A5.

13.0 Protests and Requests for Redress

- 13.1 For protests where only a rule of part 2 (When Boats Meet) is alleged to have been broken, an arbitration hearing will be offered prior to any hearing.
- 13.2 A protest shall be lodged on the appropriate form (available in the Club House) within the protest time limit, and handed to a member of the Sailing Committee.
- 13.3 The time limit for lodging a protest is 120 minutes after the last boat has finished.

14.0 Handicapping

- 14.1 Handicapping will be in accordance with the GHYC Handicapping system.
- 14.2 Initial handicaps will be published.

15.0 Scoring

- 15.1 Two (2) races are required to be completed to constitute a series.
- 15.2 When three races have been completed, a boat's series scores will be the total of her scores
- 15.3 When four races have been completed a boat's series score will be the total of her races scores excluding her worst score

16.0 Safety Regulations

- 16.1 A boat that retires from a race shall notify the Committee Boat immediately.
- 16.2 All entrants are required to register with the committee boat via VHF Radio CH 66 before the warning signal advising the boat name and the number of people on board.

- 16.3 Boats may be inspected for compliance with the safety regulations at the discretion of the race committee.
- 16.4 Skippers are required to maintain a written list on board of all crew for the day (including the skipper), their next-of-kin or contact person, and a contact phone number. All crew must be made aware of the location of this list before departing their mooring.

17.0 Radio Communications

- 17.1 The standard race channel to be used is VHF Ch.66. All boats must maintain a constant radio watch on this channel.

18.0 Prizes

- 18.1 Day prizes will be awarded at Gulf Harbour Yacht Club as soon as practicable after each race, but ideally the prizegiving will commence one hour after the last boat has finished the race.
- 18.2 Competitors must be present at the prizegiving on the day to receive day prizes.
- 18.3 Series results will be advised following the completion of the final day's racing. In the event of the cancellation of the last race, an alternative time/date will be advised.
- 18.4 Series prizes will be awarded during the summer Prize Giving
 - Race 1 Brin Wilson Trophy
 - Race 2 TBA
 - Race 3 Gannet Rock Trophy
 - Race 4 TBA
 - Series Planet X Trophy

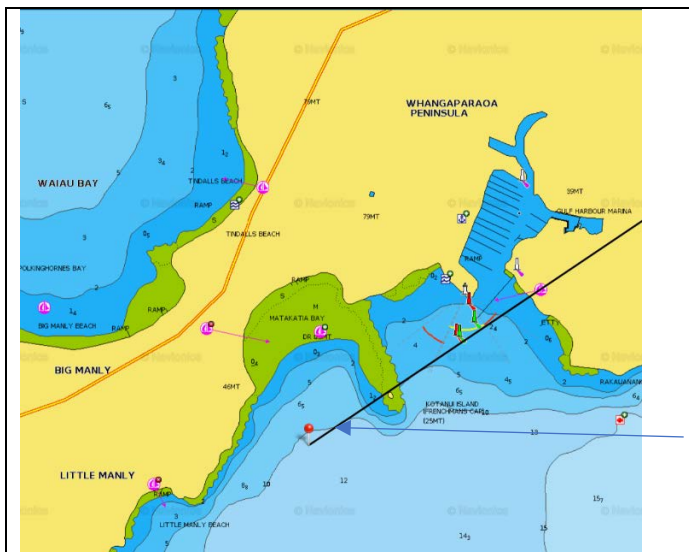
19.0 Insurance

- 19.1 Each participating boat shall be insured with valid third-party liability insurance.

20.0 Disclaimer of Liability

- 20.1 Competitors participate in the regatta entirely at their own risk. See RRS rule 4, Decision to Race.
- 20.2 The Organising Authority will not accept any liability for material damage or personal injury or death sustained in conjunction with or prior to, during, or after the regatta.

Appendix A Start and Finish Line



The Start and Finish Line is between
GPS position
36° 38.0 S and 174° 46.5 E
And
North edge of Kotanui (Frenchmans
Cap) Is



The bearing of 036° M from
GPS position
36° 38.0 S and 174° 46.5 E
Is in transit of north side of
Kotanui Is and conspicuous
White Farm house on hill
behind



The bearing of 330° M from
GPS position
36° 38.0 S and 174° 46.5 E
Is in transit of conspicuous
Blue Roof and left edge of
large trees behind