



## Gulf Harbour Yacht Club Wed Ladies Twilight Series 2018 - 19

The Organising Authority is the Gulf Harbour Yacht Club Inc,  
1299 Laurie Southwick Pde., Gulf Harbour.

**W: [ghyc.co.nz](http://ghyc.co.nz)**

### Notice of Race and Sailing Instructions

#### 1.0 Rules

- 1.1 The regatta will be governed by the 'rules' as defined in *The Racing Rules of Sailing*.
- 1.2 For Keel Yachts the YNZ Safety Regulations Part II, Category 5 shall apply.
- 1.3 For Trailer Yachts the YNZ Safety Regulations Part V, Category B shall apply.
- 1.4 For Sports Boats the YNZ Safety Regulations Part VI Category B shall apply.
- 1.5 For Unballasted Centreboard yachts (including multihulls) and Ballasted Open Yachts not complying with Part II-IV of the YNZ Safety Regulations, Part I shall apply.
- 1.6 All yachts must be equipped with a VHF radio capable of transmitting and receiving on all channels. In addition, Sports Boats, Unballasted Centreboard yachts (including multihulls) and Ballasted Open Yachts shall carry their VHF in a waterproof bag and be carried on one crew member.
- 1.7 Boats may fly extras (Extras are defined as sails not usually used to advantage to windward).
- 1.8 RRS Appendix T will apply (Arbitration).

#### 2.0 Eligibility & Entry

- 2.1 Entries will be accepted from Keel Yachts, Trailer Yachts, Sports Boats and Multihulls, registered with YNZ and whose owners/skippers are financial members of a yacht club affiliated to YNZ.
- 2.2 The series is a woman only event; only one male is allowed on board whilst racing. He may give advice if requested but may not give any physical assistance except in an emergency. Any such assistance must result in the immediate retirement of the boat from the race
- 2.3 GHYC reserve the right to accept or refuse any entry.
- 2.4 Entries are to be made on the Gulf Harbour Yacht Club website using the online entry form, with payment of the designated entry fee. **Entrants must provide a mobile phone number that they can be contacted on while racing.**
- 2.5 Only series entrants will be eligible for series points. Entries for individual races to be received by 1600 hrs on the Tuesday preceding a scheduled race day

Entry Fees: **\$80** for series or **\$15** per race.      **\$100** for late series entry

- 2.6 Series entries to be received by 1600 hours on Friday 19<sup>th</sup> October. Late series entries will be accepted up till 1600 hours on Tuesday 6 November subject to payment of the late fee. Any races completed prior to both a completed online entry and payment being received will be scored DNC
- 2.7 Payment of entry fees by electronic payment to GHYC Bank Acct **12 3084 0101733 00**
  - Details to be loaded with payment  
**Particulars** = Boat Name      **Code** = Series Name      **Reference** = Series or Race #

### **3.0 Notices to Competitors**

- 3.1 Notices will be posted on one or more of the following:
  - 3.1.1 The Gulf Harbour Yacht Club website [www.ghyc.co.nz](http://www.ghyc.co.nz)
  - 3.1.2 Advised by Txt to the mobile number given in 2.3 above.
  - 3.1.3 Advised by email to the email address loaded with the online entry form
  - 3.1.4 On the official notice board(s) located at the GHYC clubrooms

### **4.0 Changes to Sailing Instructions**

- 4.1 Any change to the Sailing Instructions will be posted at least 2 hours prior to the scheduled start of the day's racing, on the day it will take effect.
- 4.2 Notices of cancellation will endeavor be by email and /or Txt to the email address /mobile number (refer 3.0 above), at least 1 hour prior to the scheduled start of the day's racing.

### **5.0 Signals Made Ashore**

- 5.1 Signals made ashore will be displayed at the Gulf Harbour Yacht Club flagpole

### **6.0 Schedule of Races**

- 6.1 The warning signal for each Race is 1825 hours
  
- 6.2 Race 1 Wednesday 24 Oct 2018  
Race 2 Wednesday 7 Nov 2018  
Race 3 Wednesday 21 Nov 2018  
Race 4 Wednesday 5 Dec 2018  
Race 5 Wednesday 13 Feb 2019  
Race 6 Wednesday 27 Feb 2019  
Race 7 Wednesday 13 Mar 2019  
Race 8 Wednesday 27 Mar 2019
  
- 6.3 To alert boats that a race will begin soon, the orange starting line flag will be displayed with one sound at least five minutes before a warning signal is made.

### **7.0 Class Flag**

- 7.1 Class flag will be White

### **8.0 Racing Area**

- 8.1 The races will be held on the waters south of the Whangaparaoa peninsula

### **9.0 Course to be sailed**

- 9.1 The courses are detailed in Addendum A
- 9.2 The race committee will display the course number on a board with a black digit on a white background

### **10.0 Marks**

- 10.1 The marks are detailed in Addendum A

### **11.0 The Start**

- 11.1 The start for all courses will be approximately 0.7nm Southeast of the marina entrance
- 11.2 The starting line will be between a Staff displaying an Orange flag on the Race Committee Vessel and the course side of an orange conical buoy at the other end.
- 11.3 A boat that does not start within 10 minutes after her starting signal will be scored DNS without a hearing. This changes RRS A4 and A5
- 11.4 If any boat or part of a boat, or crew, is on the course side of the starting line at the starting signal and is identified, the race committee shall attempt to broadcast her number on VHF Radio Ch 77. Failure to make a broadcast or to time it accurately will not be grounds for redress. This changes Rule 62.1 (a). (Redress)

### **12.0 The Finish**

- 12.1 The finish line will be between a Staff displaying a blue flag on the Race Committee Vessel and the course side of an orange conical buoy at the other end.

### **13.0 Time limit**

- 13.1 The time limit for the first boat to finish in is 2000 hrs.
- 13.2 Boats failing to finish within 30 minutes after the first boat of its fleet sails the course and finishes will be scored DNF (Did Not Finish) This changes RRS 35, A4 and A5.

### **14.0 Protests and requests for Redress**

- 14.1 For protests where only a rule of part 2 (When boats Meet) is alleged to have been broken, an arbitration hearing will be offered prior to any hearing.
- 14.2 A protest shall be lodged in the appropriate format (Forms available from the Club House or YNZ Website) within the protest time limit and delivered to a member of the Sailing Committee.
- 14.3 The time limit for lodging a protest is 60 minutes after the last boat has finished.

### **15.0 Handicapping**

- 15.1 Handicapping will be in accordance with the GHYC Handicapping system.

### **16.0 Scoring**

- 16.1 One (1) race is required to be completed to constitute a series.
- 16.2 (a) When fewer than 7 races have been completed a boats series scores will be the total of her race scores  
(b) When 7 - 8 races have been completed a boats series score will be the total of her race scores excluding her worst score
- 16.3 RRS Appendix A9 will be used

### **17.0 Safety Regulations**

- 17.1 Skippers are required to maintain a written list on board of all crew for the day (including the skipper), their next-of-kin or contact person, and a contact phone number. All crew must be made aware of the location of this list before departing their marina / mooring.
- 17.2 All entrants are required to register with the Race Committee Vessel via VHF Radio Ch 77, before the warning signal advising the boat name and the number of people on board.
- 17.3 All skippers must take responsibility to ensure at all times their boat complies with the relative safety regulations in Sailing Instructions Rule 1.0 above
- 17.4 Boats may be inspected for compliance with the safety regulations at the discretion of the Race Committee or GHYC Safety Officer (On- Water)

- 17.5 **A boat that retires from a race shall notify the Race Committee Vessel immediately  
Acknowledgement is required from the Race Committee**

**18.0 Radio Communications**

- 18.1 The standard race channel to be used is **VHF Radio Ch.77**. All boats must maintain a constant radio watch on this channel.
- 18.2 The call sign for the Race Committee Vessel is **“Gulf Harbour Race Control “**

**19.0 Prizes**

- 19.1 Day prizes will be awarded at the Gulf Harbour Yacht Club as soon as practicable after each race.
- 19.2 Series prizes will be awarded during the GHYC Summer prize Giving
- 19.3 The number of prizes awarded may be dependent on the number of boats participating
- |              |                                                             |
|--------------|-------------------------------------------------------------|
| 1 – 3 boats  | 1 <sup>st</sup> prize                                       |
| 4 – 6 boats  | 1 <sup>st</sup> and 2 <sup>nd</sup> prize                   |
| 7 plus boats | 1 <sup>st</sup> , 2 <sup>nd</sup> and 3 <sup>rd</sup> prize |

**20.0 Insurance**

- 20.1 Each participating boat shall be insured with valid Third-Party insurance – liability insurance with a minimum cover of \$5M per incident or equivalent

**21.0 Disclaimer of Liability**

- 21.1 Competitors participate in the regatta entirely at their own risk. See RRS rule 4, Decision to Race. The responsibility for a boat’s decision to participate in a race or to continue racing is hers alone.
- 21.2 The Organising Authority will not accept any liability for material damage or personal injury or death sustained in conjunction with, prior to, during, or after the regatta.

Further details contact the administrative office at:  
GHYC. Ph 09 424 2118  
[admin@ghyc.co.nz](mailto:admin@ghyc.co.nz)

**[www.ghyc.co.nz](http://www.ghyc.co.nz)**

## Addendum A - Twilight Series Courses

### Marks:

Mark A will be an orange conical buoy in position 36 38.170S 174 47.670E

Mark B will be an orange conical buoy in position 36 38.880S 174 46.820E

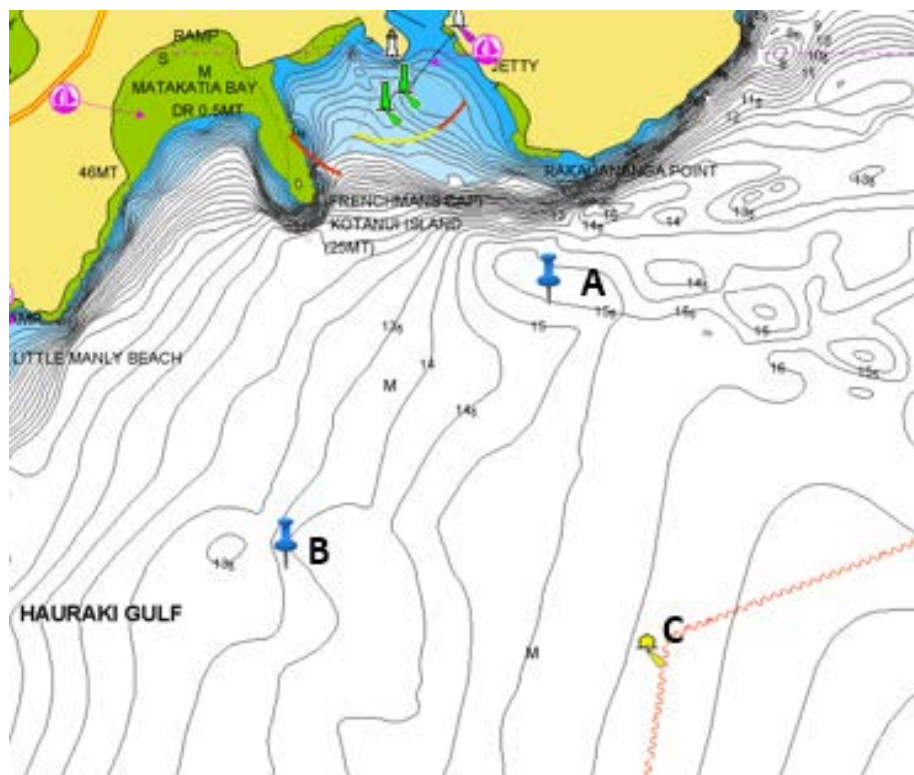
Mark C will be the Yellow Gulf Harbour Sailing Buoy in position  
36 39.130S 174 48.030E

### Courses:

Course Numbers 1, 3, 5 ROUNDING MARKS TO STARBOARD

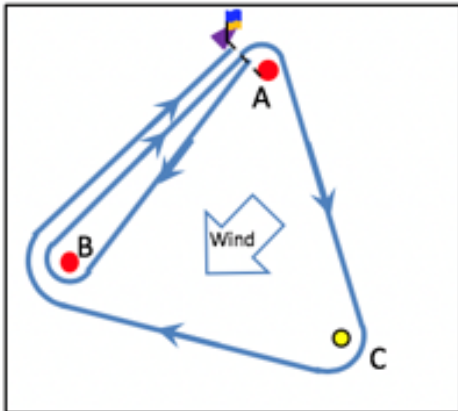
Course Numbers 2, 4, 6 ROUNDING MARKS TO PORT

Course #	Order Buoys to be taken	Marks to be taken to:	Approx. Wind Direction
1	Start (at A) – B – A – C – B – Finish (at A)	Starboard	North East
2	Start (at A) – B – A – B – C – Finish (at A)	Port	South West
3	Start (at A) – C – B – C – B – Finish (at A)	Starboard	Westerly
4	Start (at A) – B – C – B – C – Finish (at A)	Port	Easterly
5	Start (at A) – C – A – C – B – Finish (at A)	Starboard	Southerly
6	Start (at A) – C – A – B – C - Finish (at A)	Port	Northerly

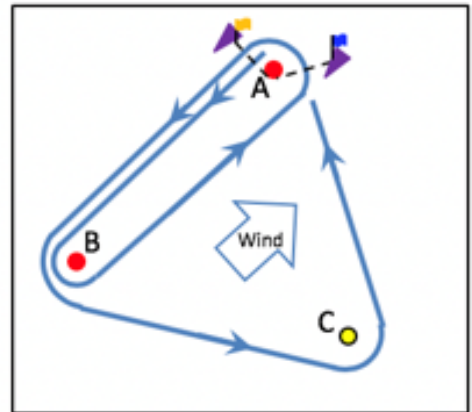


## Addendum A – Twilight Series Course Diagrams

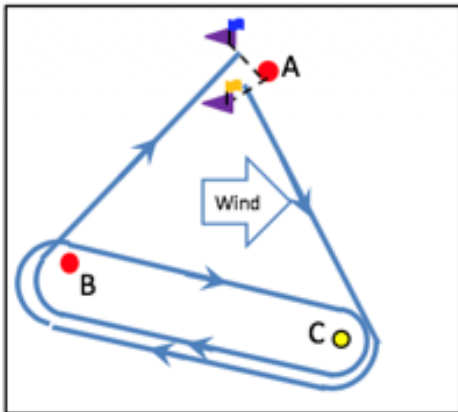
**Course 1**  
 Starboard rounding (Northeast Wind)  
 Start (at A) – B – A – C – B – Finish (at A)



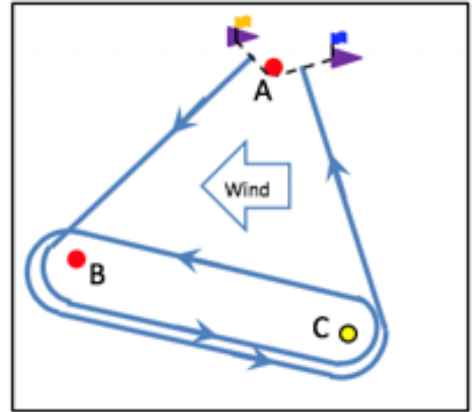
**Course 2**  
 Port rounding (Southwest Wind)  
 Start (at A) – B – A – B – C – Finish (at A)



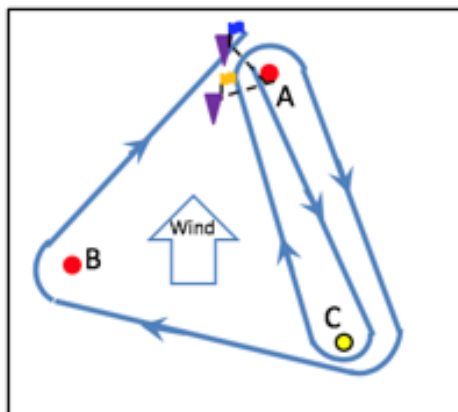
**Course 3**  
 Starboard rounding (Westerly Wind)  
 Start (at A) – C – B – C – B – Finish (at A)



**Course 4**  
 Port rounding (Easterly Wind)  
 Start (at A) – B – C – B – C – Finish (at A)



**Course 5**  
 Starboard rounding (Southerly Wind)  
 Start (at A) – C – A – C – B – Finish (at A)



**Course 6**  
 Port rounding (Northerly Wind)  
 Start (at A) – C – A – B – C – Finish (at A)

